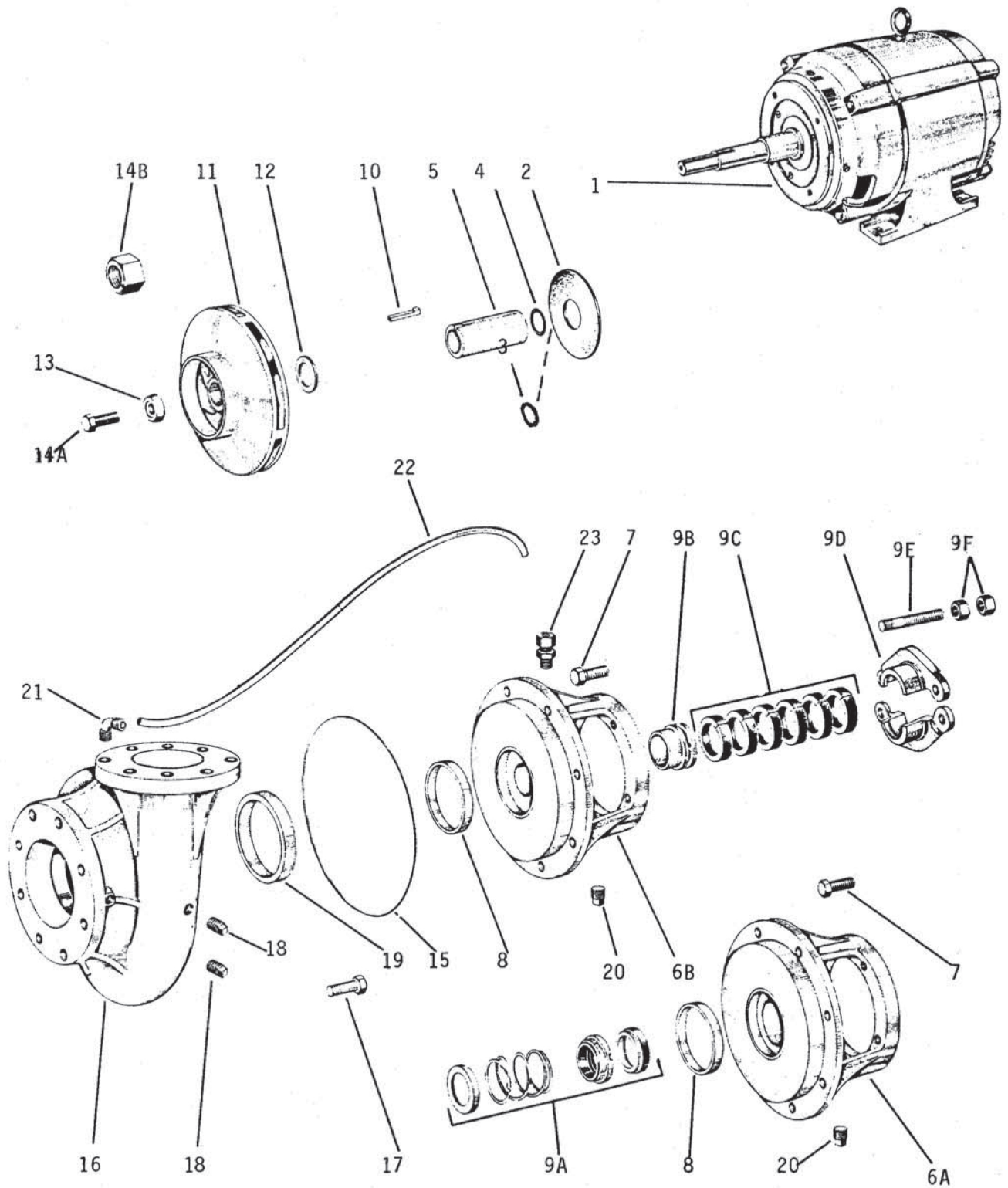




Series G



GRISWOLD PUMP CO.

E, F, G Repair Parts

Page 15

October 1, 2003

Item #	Description	R2GH5	R2GH7.5	R2GH10	Qty.
PUMPS	1Ph ODP	93036127	93036135	93037463	B/M
	1Ph TEFC	93036128	93036136	93037464	B/M
	3Ph ODP	93036143	93036150	93036168	B/M
	3Ph TEFC	93036192	93036200	93036218	B/M
PUMP ENDS	1Ph	93036242	93036267	93036275	B/M
	3Ph	93036242	93036259	93036275	B/M
MOTORS 1	1Ph ODP	90111725	90111881	90113481	1
	1Ph TEFC	90111726	90111882	90113481	1
	3Ph ODP	90111733	90111758	90111899	1
	3Ph TEFC	90114612	90114638	90114653	1
2	Deflector	22020408	22020408	22020408	1
4	Sleeve O-rings	47002209	47002209	47002209	2
5	Sleeve	8287211	8287211	8287211	1
6A	Seal Bracket	2159200	1Ph 2156909	2156909	1
			3Ph 2159200		1
7	Mtr/Brkt Cap Screws	14129225SS	1Ph 14178701	14178701	4
			3Ph 14129225SS		4
8	Brkt Wear Ring (Brz)	N/A	N/A	N/A	
9A	Mechanical Seal	10036903	10036903	10036903	1
10	Imp. Key	14412407	14412407	14412407	1
11	Impeller	5123312	5123412	5123518	1
12	Imp. Washer (SS)	N/A	N/A	N/A	1
13	Imp. Adapter (SS)	14412209	14412209	14412209	1
14	Imp. Bolt	ALLEN375 16X125U	ALLEN375 16X125U	ALLEN375 16X125U	1
15	Brkt/Case O-ring	47017108	47017108	47017108	1
16	Case	3078409	3078409	3078409	1
17	Brkt/Case Cap Screws	14129225SS	14129225SS	14129225SS	8
18	Case Plugs	31005911	31005911	31005911	5
19	Case Wear Ring (Brz)	8038408	8038408	8038408	1
20	Bracket Plug	N/A	N/A	N/A	
22	1/2" Tubing	N/A	N/A	N/A	
23	1/2" Male Comp. Fitting	N/A	N/A	N/A	

GRISWOLD PUMP CO.

E, F, G Repair Parts

Page 16

October 1, 2003

Item #	Description	R2GH15	R2GH20	R4GH30	Qty.
PUMPS	1Ph ODP	-----	-----	-----	B/M
	1Ph TEFC	-----	-----	-----	B/M
	3Ph ODP	93036176	93036184	93036317	B/M
	3Ph TEFC	93036226	93036234	93036358	B/M
PUMP ENDS	1Ph	-----	-----	-----	B/M
	3Ph	93036283	93036309	93036374	B/M
MOTORS 1	1Ph ODP	-----	-----	-----	1
	1Ph TEFC	-----	-----	-----	1
	3Ph ODP	90111907	90118282	90114398	1
	3Ph TEFC	90114679	90114695	90114778	1
2	Deflector	22020408	22020507	22020507	1
4	Sleeve O-rings	47002209	47012604	47012604	2
5	Sleeve	8287211	8287310	8028615	1
6A	Seal Bracket	2156909	2137503	2063709	1
7	Mtr/Brkt Cap Screw	14178701	14389803	14135008	4
8	Brkt Wear Ring (Brz)	N/A	N/A	8036105	1
9A	Mechanical Seal	10036903	10037002	10037000	1
10	Imp. Key	14412407	14412506	22056006	1
11	Impeller	5123612	5191712	5122312	1
12	Imp. Washer (SS)	N/A	N/A	14034607	1
13	Imp. Adapter (SS)	14412209	14412308	14417604	1
14	Imp. Bolt	ALLEN500 13X150U	ALLEN500 13X150U	ALLEN500 13X150U	1
15	Brkt/Case O-ring	47017108	47017108	47027404	1
16	Case	3078409	3078409	3078607	1
17	Brkt/Case Cap Screws	14129225SS	14129225SS	14178701	8
18	Case Plugs	31005911	31005911	31006117	1
				31005911	5
19	Case Wear Ring (Brz)	8038408	8038408	8039802	1
20	Bracket Plug	N/A	N/A	31006117	1
				31005911	1
22	1/2" Tubing	N/A	N/A	31092505	18"
23	1/2" Male Comp. Fittings	N/A	N/A	31051709	2

GRISWOLD PUMP CO.

E, F, G Repair Parts

Page 17

October 1, 2003

Item #	Description	R4GH40	R4GH50	R4GH60	R4GH75	Qty.
PUMPS	1Ph ODP	-----	-----	-----	-----	B/M
	1Ph TEFC	-----	-----	-----	-----	B/M
	3Ph ODP	93036325	93036333	93036341	93037422	B/M
	3Ph TEFC	93036366	93036334	93036342	93037423	B/M
PUMP ENDS	1Ph	-----	-----	-----	-----	B/M
	3Ph	93036382	93036390	93036408	93037430	B/M
MOTORS 1	1Ph ODP	-----	-----	-----	-----	1
	1Ph TEFC	-----	-----	-----	-----	1
	3Ph ODP	90114414	90114422	90114430	90114810	1
	3Ph TEFC	90114273	90108367	90114431	90114811	1
2	Deflector	22020507	22020507	22020507	22032205	1
4	Sleeve O-rings	47012604	47012604	47012604	47013206	2
5	Sleeve	8028615	8028615	8028615	8259210	1
6A	Seal Bracket	2063709	2063709	2036709	2242404	1
7	Mtr/Brkt Cap Screws	14135008	14135008	14135008	14135008	4
8	Brkt Wear Ring (Brz)	8036105	8036105	8036105	8036105	1
9A	Mechanical Seal	10037000	10037000	10037000	10036507	1
10	Imp. Key	22056006	22056006	22056006	14060800	1
11	Impeller	5122411	5386113	5379011	5378518	1
12	Imp. Washer (SS)	14034607	14034607	14034607	14040307	1
13	Imp. Adapter (SS)	14417604	14417604	14417604	SX10252	1
14	Imp. Bolt	ALLEN500 13X150U	ALLEN500 13X150U	ALLEN500 13X150U	ALLEN500 13X150U	1
15	Brkt/Case O-ring	47027404	47027404	47027404	47027404	1
16	Case	3078607	3078607	3078607	3078607	1
17	Brkt/Case Cap Screws	14178701	14178701	14178701	14178701	8
18	Case Plugs	31006117	31006117	31006117	31006117	1
		31005911	31005911	31005911	31005911	5
19	Case Wear Ring (Brz)	8039802	8039802	8039802	8039802	1
20	Bracket Plug	31006117	31006117	31006117	31006117	1
		31005911	31005911	31005911	31005911	1
22	1/2" Tubing	31092505	31092505	31092505	31092505	18"
23	1/2" Male Comp. Fittings	31051709	31051709	31051709	31051709	2

GRISWOLD PUMP CO.

E, F, G Repair Parts

Page 18

October 1, 2003

Item #	Description	R3GL5	R3GL7.5	R3GL10	Qty.
PUMPS	1Ph ODP	93036515	93036523	93037471	B/M
	1Ph TEFC	93036516	93036524	93037472	B/M
	3Ph ODP	93036531	93036549	93036556	B/M
	3Ph TEFC	93036564	93036572	93036580	B/M
PUMP ENDS	1Ph	93036606	93036522	93036622	B/M
	3Ph	93036606	93036598	93036622	B/M
MOTORS 1	1Ph ODP	90111725	90111881	90113481	1
	1Ph TEFC	90111726	90111882	90113482	1
	3Ph ODP	90111733	90111758	90111899	1
	3Ph TEFC	90114612	90114638	90114653	1
2	Deflector	22020408	22020408	22020408	1
4	Sleeve O-rings	47002209	47002209	47002209	2
5	Sleeve	8287211	8287211	8287211	1
6A	Seal Bracket	2159408	1Ph 2119907	2119907	1
			3Ph 2159408		1
7	Mtr/Brkt Cap Screws	14129225SS	1Ph 14178701	14178701	4
			3Ph 14129225SS		4
8	Brkt Wear Ring (Brz)	N/A	N/A	N/A	
9A	Mechanical Seal	10036903	10036903	10036903	1
10	Imp. Key	14412407	14412407	14412407	1
11	Impeller	5307814	5308010	5308218	1
12	Imp. Washer (SS)	14020408	14020408	14020408	1
13	Imp. Adapter (SS)	14412209	14412209	14412209	1
14	Imp. Bolt	ALLEN375 16X125U	ALLEN375 16X125U	ALLEN375 16X125U	1
15	Brkt/Case O-ring	47027404	47027404	47027404	1
16	Case	3079001	3079001	3079001	1
17	Brkt/Case Cap Screws	14178701	14178701	14178701	8
18	Case Plugs	31005911	31005911	31005911	5
19	Case Wear Ring (Brz)	8038408	8038408	8038408	1
20	Bracket Plug	N/A	1Ph 31006117	31006117	1
22	1/2" Tubing	N/A	N/A	N/A	
23	1/2" Male Comp. Fitting	N/A	N/A	N/A	

GRISWOLD PUMP CO.

E, F, G Repair Parts

Page 19

October 1, 2003

Item #	Description	R2GM5	R2GM7.5	R2GM10	R2GM15	Qty.
PUMPS	1Ph ODP	93036630	93036648	93037489	-----	B/M
	1Ph TEFC	93036631	93036649	93037490	-----	B/M
	3Ph ODP	93036655	93036663	93036671	93036673	B/M
	3Ph TEFC	93036689	93036697	93036705	93036672	B/M
PUMP ENDS	1Ph	93036713	93036735	93036747	-----	B/M
	3Ph	93036713	93036721	93036747	93036749	B/M
MOTORS 1	1Ph ODP	90111725	90111881	90113481	-----	1
	1Ph TEFC	90111726	90111882	90113482	-----	1
	3Ph ODP	90111733	90111758	90111899	90111907	1
	3Ph TEFC	90114612	90114638	90114653	90114679	1
2	Deflector	22020408	22020408	22020408	22020408	1
4	Sleeve O-ring	47002209	47002209	47002209	47002209	2
5	Sleeve	8287211	8287211	8287211	8287211	1
6A	Seal Bracket	2159408	1Ph 2156909	2156909	2156909	1
			3Ph 2159200			1
7	Mtr/Brkt Cap Screw	14129225SS	1Ph 14178701	14178701	14178701	4
			3Ph 14129225SS			4
8	Brkt Wear Ring (Brz)	N/A	N/A	N/A	N/A	
9A	Mechanical Seal	10036903	10036903	10036903	10036903	1
10	Imp. Key	14412407	14412407	14412407	14412407	1
11	Impeller	5069513	5375316	5375415	5374715	1
12	Imp. Washer (SS)	14020408	14020408	14020408	14020408	1
13	Imp. Adapter (SS)	14412209	14412209	14412209	14412209	1
14	Imp. Bolt	ALLEN375 16X125U	ALLEN375 16X125U	ALLEN375 16X125U	ALLEN375 16X125U	1
15	Brkt/Case O-ring	47017108	47017108	47017108	47017108	1
16	Case	3079100	3079100	3079100	3079100	1
17	Brkt/Case Cap Screws	14129225SS	14129225SS	1419225SS	14129225SS	8
18	Case Plugs	31005911	31005911	31005911	31005911	5
19	Case Wear Ring (Brz)	8038408	8038408	8038408	8038408	1
20	Bracket Plug	N/A	N/A	N/A	N/A	
22	1/2" Tubing	N/A	N/A	N/A	N/A	
23	1/2" Male Comp. Fitting	N/A	N/A	N/A	N/A	

GRISWOLD PUMP CO.

E, F, G Repair Parts

Page 20

October 1, 2003

Item #	Description	R3GM10	R3GM15	R3GM20	Qty.
PUMPS	1Ph ODP	93036750	-----	-----	B/M
	1Ph TEFC	-----	-----	-----	B/M
	3Ph ODP	93036754	93036762	93036770	B/M
	3Ph TEFC	93036812	93036820	93036838	B/M
PUMP ENDS	1Ph	93036880	-----	-----	B/M
	3Ph	93036879	93036887	93036890	B/M
MOTORS	1Ph ODP	90113481	-----	-----	1
	1Ph TEFC	-----	-----	-----	1
	3Ph ODP	90111899	90111907	90114331	1
	3Ph TEFC	90114653	90114679	90114737	1
1					
2	Deflector	22020408	22020408	22020507	1
4	Sleeve O-rings	47002209	47002209	47012604	2
5	Sleeve	8287211	8287211	8028615	1
6A	Seal Bracket	2119907	2119907	2104305	1
7	Mtr/Brkt Cap Screws	14178701	14178701	14133003	4
8	Brkt Wear Ring (Brz)	8036105	8036105	8036105	
9A	Mechanical Seal	10036903	10036903	10037000	1
10	Imp. Key	14412407	14412407	22056006	1
11	Impeller	5051016	5086012	5051214	1
12	Imp. Washer (SS)	14020408	14020408	14034607	1
13	Imp. Adapter (SS)	14412209	14412209	14417604	1
14	Imp. Bolt	ALLEN375 16X175U	ALLEN375 16X175U	ALLEN500 13X125U	1
15	Brkt/Case O-ring	47027404	47027404	47027404	1
16	Case	3078508	3078508	3078508	1
17	Brkt/Case Cap Screws	14178701	14178701	14178101	8
18	Case Plugs	31006117 31005911	31006117 31005911	31006117 31005911	1 5
19	Case Wear Ring (Brz)	8036105	8036105	8036105	1
20	Bracket Plug	31006117	31006117	31006117 31005911	1 1
22	1/2" Tubing	31092505	31092505	31092505	18"
23	1/2" Male Comp. Fittings	31051709	31051709	31051709	2

GRISWOLD PUMP CO.

E, F, G Repair Parts

Page 21

October 1, 2003

Item #	Description	R3GM25	R3GM30	R3GM40	Qty.
PUMPS	1Ph ODP	-----	-----	-----	B/M
	1Ph TEFC	-----	-----	-----	B/M
	3Ph ODP	93036788	93036796	93036804	B/M
	3Ph TEFC	93036846	93036843	93036861	B/M
PUMP ENDS	1Ph	-----	-----	-----	B/M
	3Ph	93036903	93036929	93036937	B/M
MOTORS	1Ph ODP	-----	-----	-----	1
	1Ph TEFC	-----	-----	-----	1
	3Ph ODP	90114364	90114398	90114414	1
	3Ph TEFC	90114752	90114778	90114273	1
1					
2	Deflector	22020507	22020507	22020507	1
4	Sleeve O-rings	47012604	47012604	47012604	2
5	Sleeve	8028615	8028615	8028615	1
6A	Seal Bracket	2104305	2063709	2063709	1
7	Mtr/Brkt Cap Screws	14133003	14135008	14135008	4
8	Brkt Wear Ring (Brz)	8036105	8036105	8036105	
9A	Mechanical Seal	10037000	10037000	10037000	1
10	Imp. Key	22056006	22056006	22056006	1
11	Impeller	5051313	5051412	5051511	1
12	Imp. Washer (SS)	14034607	14034607	14034607	1
13	Imp. Adapter (SS)	14417604	14417604	14417604	1
14	Imp. Bolt	ALLEN500 13X125U	ALLEN500 13X125U	ALLEN500 13X125U	1
15	Brkt/Case O-ring	47027404	47027404	47027404	1
16	Case	3078508	3078508	3078508	1
17	Brkt/Case Cap Screws	14178701	14178701	14178701	8
18	Case Plugs	31006117 31005911	31006117 31005911	31006117 31005911	1 5
19	Case Wear Ring (Brz)	8036105	8036105	8036105	1
20	Bracket Plug	31006117 31005911	31006117 31005911	31006117 31005911	1 1
22	1/2" Tubing	31092505	31092505	31092505	18"
23	1/2" Male Comp. Fittings	31051709	31051709	31051709	2

GRISWOLD PUMP CO.

E, F, G Repair Parts

Page 22

October 1, 2003

Item #	Description	R4GM15	R4GM20	R4GM25	Qty.
PUMPS	1Ph ODP	-----	-----	-----	B/M
	1Ph TEFC	-----	-----	-----	B/M
	3Ph ODP	93037109	93037117	93037125	B/M
	3Ph TEFC	93037166	93037174	93037126	B/M
PUMP ENDS	1Ph	-----	-----	-----	B/M
	3Ph	93037232	93037240	93037257	B/M
MOTORS	1Ph ODP	-----	-----	-----	1
	1Ph TEFC	-----	-----	-----	1
	3Ph ODP	90111907	90114331	90114364	1
	3Ph TEFC	90114679	90114737	90114752	1
1					
2	Deflector	22020408	22020507	22020507	1
4	Sleeve O-rings	47002209	47012604	47012604	2
5	Sleeve	8287211	8028615	8028615	1
6A	Seal Bracket	2119907	2104305	2104305	1
7	Mtr/Brkt Cap Screws	14178701	14133003	14133003	4
8	Brkt Wear Ring (Brz)	8036105	8036105	8036105	1
9A	Mechanical Seal	10036903	10037000	10037000	1
10	Imp. Key	14412407	22056006	22056006	1
11	Impeller	5119417	5119318	5119219	1
12	Imp. Washer (SS)	N/A	14034607	14034607	1
13	Imp. Adapter (SS)	14412209	14417604	14417604	1
14	Imp. Bolt	ALLEN375 16X175U	ALLEN500 13X125U	ALLEN500 13X125U	1
15	Brkt/Case O-ring	47027404	47027404	47027404	1
16	Case	3078607	3078607	3078607	1
17	Brkt/Case Cap Screws	14178701	14178701	14178701	8
18	Case Plugs	31006117	31006117	31006117	1
		31005911	31005911	31005911	5
19	Case Wear Ring (Brz)	8039802	8039802	8039802	1
20	Bracket Plug	31006117	31006117	31006117	1
		31005911	31005911	31005911	1
22	1/2" Tubing	31092505	31092505	31092505	18"
23	1/2" Male Comp. Fittings	31051709	31051709	31051709	2

GRISWOLD PUMP CO.

E, F, G Repair Parts

Page 23

October 1, 2003

Item #	Description	R4GM30	R4GM40	R4GM50	Qty.
PUMPS	1Ph ODP	-----	-----	-----	B/M
	1Ph TEFC	-----	-----	-----	B/M
	3Ph ODP	93037075	93037083	93037091	B/M
	3Ph TEFC	93037133	93037141	93037185	B/M
PUMP ENDS	1Ph	-----	-----	-----	B/M
	3Ph	93037182	93037208	93037216	B/M
MOTORS	1Ph ODP	-----	-----	-----	1
	1Ph TEFC	-----	-----	-----	1
	3Ph ODP	90114398	90114414	90114422	1
	3Ph TEFC	90114778	90114273	90108367	1
1					
2	Deflector	22020507	22020507	22020507	1
4	Sleeve O-rings	47012604	47012604	47012604	2
5	Sleeve	8028615	8028615	8028615	1
6A	Seal Bracket	2063709	2063709	2063709	1
7	Mtr/Brkt Cap Screws	14135008	14135008	14135008	4
8	Brkt Wear Ring (Brz)	8036105	8036105	8036105	1
9A	Mechanical Seal	10037000	10037000	10037000	1
10	Imp. Key	22056006	22056006	22056006	1
11	Impeller	5119110	5119011	5118914	1
12	Imp. Washer (SS)	14034607	14034607	14034607	1
13	Imp. Adapter (SS)	14417604	14417604	14417604	1
14	Imp. Bolt	ALLEN500 13X125U	ALLEN500 13X125U	ALLEN500 13X125U	1
15	Brkt/Case O-ring	47027404	47027404	47027404	1
16	Case	3078607	3078607	3078607	1
17	Brkt/Case Cap Screws	14178701	14178701	14178701	8
18	Case Plugs	31006117 31005911	31006117 31005911	31006117 31005911	1 5
19	Case Wear Ring (Brz)	8039802	8039802	8039802	1
20	Bracket Plug	31006117 31005911	31006117 31005911	31006117 31005911	1 1
22	1/2" Tubing	31092505	31092505	31092505	18"
23	1/2" Male Comp. Fittings	31051709	31051709	31051709	2