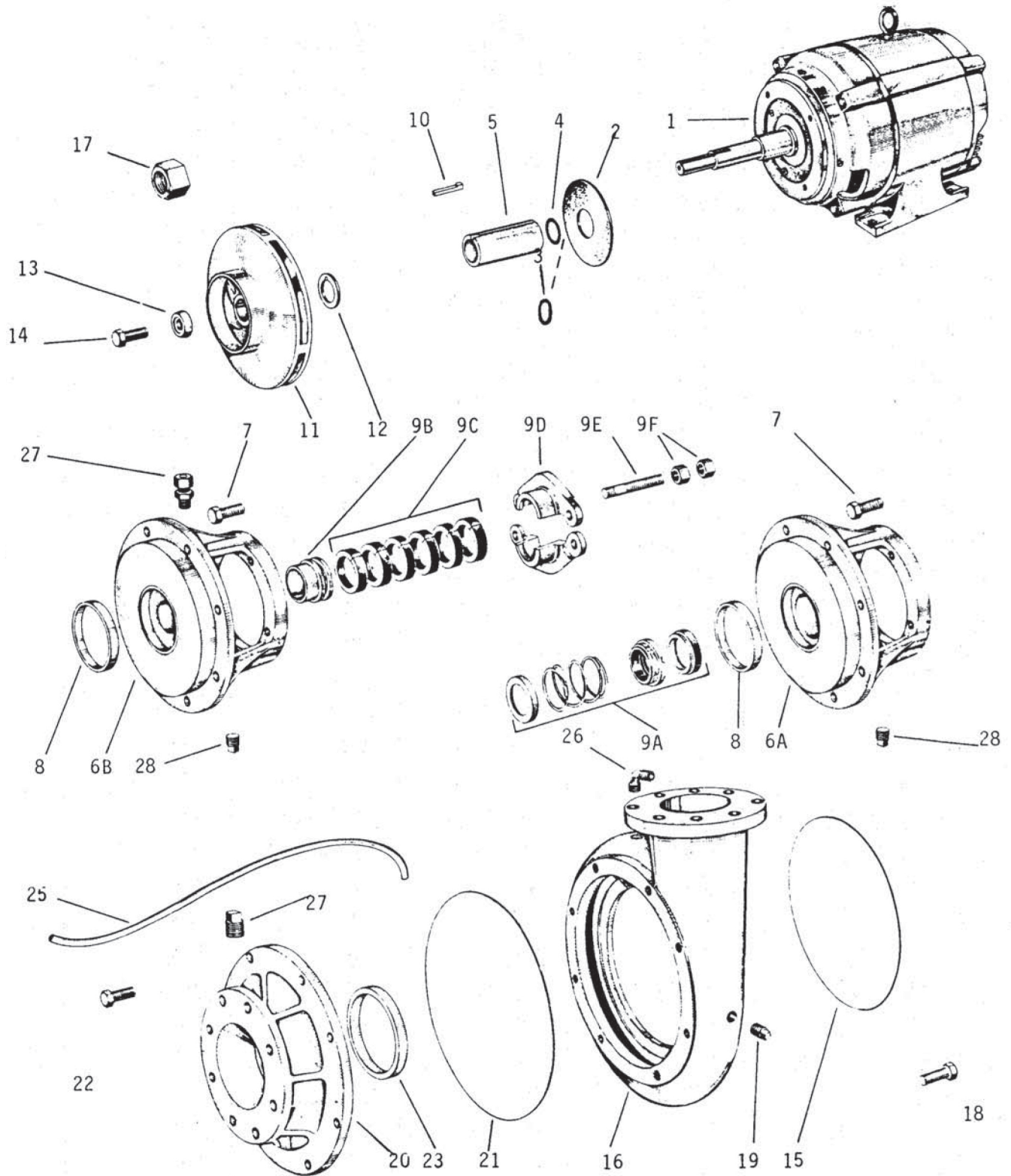


GRISWOLD™

A DOVER COMPANY

Series E



GRISWOLD PUMP CO.

E, F, G Repair Parts

Page 1

October 1, 2003

Item #	Description	R3EM3	R3EM5	R3EM7.5	R3EM10	Qty.
PUMPS	1Ph ODP	93053346	93053353	93053361	93053370	B/M
	1Ph TEFC	93053347	-----	-----	-----	B/M
	3Ph ODP	93053379	93053389	93053395	93053403	B/M
	3Ph TEFC	93053411	93053429	93053437	93053445	B/M
PUMP ENDS	1Ph	93053952	93053478	93053486	93053492	B/M
	3Ph	93053952	93053460	93053486	93053492	B/M
MOTORS 1	1Ph ODP	90114141	90114158	90114166	90114176	1
	1Ph TEFC	90114142	90114159	90114168	90114178	1
	3Ph ODP	90114182	90114190	90114208	90114216	1
	3Ph TEFC	90114604	90114620	90114638	90114661	1
2	Deflector	22020408	22020408	22020408	22020408	1
4	Sleeve O-rings	47002209	47002209	47002209	47002209	2
5	Sleeve (Brz)	8287211	8287211	8287211	8287211	1
6A	Seal Bracket	2159408	1Ph 2119907	2119907	2119907	1
			3Ph 2159408			1
7	Mtr/Brkt Cap Screws	14129225SS	14129225SS	14178701	14178701	4
8	Brkt Wear Ring (Brz)	N/A	N/A	N/A	N/A	
9A	Mechanical Seal	10036903	10036903	10036903	10036903	1
10	Shaft Key	14412407	14412407	14412407	14412407	1
11	Impeller	5378211	5378310	5378419	5378518	1
12	Imp. Washer (SS)	14020408	14020408	14020408	14020408	1
13	Imp. Adapter (SS)	14412209	14412209	14412209	14412209	1
14	Imp. Bolt	ALLEN375 16X150U	ALLEN375 16X150U	ALLEN375 16X150U	ALLEN375- 16X150U	1
15	Brkt/Case O-ring	47027404	47027404	47027404	47027404	1
16	Case	3078706	3078706	3078706	3078706	1
18	Brkt/Case Cap Screws	14178701	14178701	14178701	14178701	8
19	Case Plugs	31005911	31005911	31005911	31005911	5
20	Suction Flange	3081700	3081700	3081700	3081700	1
21	Suct. Flg/Case O-ring	47027800	47027800	47027800	47027800	1
22	Suct. Flg/Case Cap Screws	14129324	14129324	14129324	14129324	8
23	Suct. Flg/Wear Ring (Brz)	8035701	8035701	8035701	8035701	1
24	1/2" Male Comp. Fitting	N/A	N/A	N/A	N/A	
25	1/2" Tubing	N/A	N/A	N/A	N/A	
27	Flange Plug	31005911	31005911	31005911	31005911	1
28	Bracket Plug	N/A	1Ph 31006117	31006117	31006117	1

GRISWOLD PUMP CO.

E, F, G Repair Parts

Page 2

October 1, 2003

Item #	Description	R4EM10	R4EM15	R4EM20	Qty.
PUMPS	1Ph ODP	93053597	-----	-----	B/M
	1Ph TEFC	-----	-----	-----	B/M
	3Ph ODP	93053502	93053510	93053528	B/M
	3Ph TEFC	93053536	93053544	93053551	B/M
PUMP ENDS	1Ph	-----	-----	-----	B/M
	3Ph	93053569	93053577	93053582	B/M
MOTORS 1	1Ph ODP	-----	-----	-----	1
	1Ph TEFC	-----	-----	-----	1
	3Ph ODP	90114216	90114224	90114349	1
	3Ph TEFC	90114661	90114687	90114745	1
2	Deflector	22020408	22020507	22020507	1
4	Sleeve O-rings	47002209	47012604	47012604	2
5	Sleeve (Brz)	8287211	8289712	8028615	1
6A	Seal Bracket	2119907	2128601	2104305	1
7	Mtr/Brkt Cap Screws	14178701	14178701	14133003	4
8	Brkt Wear Ring (Brz)	N/A	N/A	N/A	
9A	Mechanical Seal	10036903	10037000	10037000	1
10	Shaft Key	14412407	22169403	22056006	1
11	Impeller	5309919	5379615	5311311	1
12	Imp. Washer (SS)	N/A	14034607	14034607	1
13	Imp. Adapter (SS)	14412209	14412308	14412308	1
14	Imp. Bolt	ALLEN375 16X175U	ALLEN500 13X125U	ALLEN500 13X125U	1
15	Brkt/Case O-ring	47027404	47027404	47027404	1
16	Case	3079506	3079506	3079506	1
18	Brkt/Case Cap Screws	14178701	14178701	14178701	8
19	Case Plugs	31005911	31005911	31005911	5
20	Suction Flange	3082005	3082005	3082005	1
21	Suct.Flgl/Case O-ring	47027800	47027800	47027800	1
22	Suct.Flgl/Case Cap Screws	14178701	14178701	14178701	8
23	Suct.Flgl/ Wear Ring (Brz)	8032906	8032906	8032906	1
24	1/2" Male Comp. Fittings	N/A	N/A	N/A	1
25	1/2" Tubing	N/A	N/A	N/A	18"
27	Flange Plug	31005911	31005911	31005911	1
28	Bracket Plug	31006117	31006117	31006117	1

GRISWOLD PUMP CO.

E, F, G Repair Parts

Page 3

October 1, 2003

Item #	Description	R5EM15	R5EM20	R5EM25	R5EM30	Qty.
PUMPS	1Ph ODP	-----	-----	-----	-----	B/M
	1Ph TEFC	-----	-----	-----	-----	B/M
	3Ph ODP	93053615	93053620	93053627	93053635	B/M
	3Ph TEFC	93053616	93053621	93053668	93053676	B/M
PUMP ENDS	1Ph	-----	-----	-----	-----	B/M
	3Ph	93053614	93053619	93053684	93053692	B/M
MOTORS	1Ph ODP	-----	-----	-----	-----	1
	1Ph TEFC	-----	-----	-----	-----	1
	3Ph ODP	90114224	90114349	90114372	90114406	1
	3Ph TEFC	90114687	90114745	90114760	90114786	1
1						
2	Deflector	22020507	22020507	22020507	22020507	1
4	Sleeve O-rings	47012604	47012604	47012604	47012604	2
5	Sleeve (Brz)	8289712	8028615	8028615	8028615	1
6A	Seal Bracket	2128601	2104305	2063907	2063907	1
7	Mtr/Brkt Cap Screws	14178701	14178701	14135008	14135008	4
8	Brkt Wear Ring (Brz)	8028706	8028706	8028706	8028706	1
9A	Mechanical Seal	10037000	10037000	10037000	10037000	1
10	Shaft Key	22169403	22056006	22056006	22056006	1
11	Impeller (Enam Cl)	5311915	5312111	5032602	5032701	1
12	Impeller Washer (SS)	14034607	14034607	14034607	14034607	1
13	Imp. Adapter (SS)	14417604	14417604	14417604	14417604	1
14	Imp. Bolt	ALLEN500 13X125U	ALLEN500 13X125U	ALLEN500 13X125U	ALLEN500 13X125U	1
15	Brkt/Case O-ring	47027404	47027404	47027909	47027909	1
16	Case	3079309	3079309	3079209	3079209	1
18	Brkt/Case Cap Screws	14133003	14133003	14133003	14133003	8
19	Case Plugs	31005911	31005911	31005911	31005911	5
20	Suction Flange	3014602	3014602	3014602	3014602	1
21	Suct.Flgl/Case O-ring	47027909	47027909	47027909	47027909	1
22	Suct.Flgl/Case Cap Screws	14133003	14133003	14133003	14133003	8
23	Suct.Flgl/ Wear Ring (Brz)	8028706	8028706	8028706	8028706	1
24	1/2" Male Comp. Fittings	31051709	31051709	31051709	31051709	2
25	1/2" Tubing	31092505	31092505	31092505	31092505	18"
27	Flange Plugs	31006117	31006117	31006117	31006117	2
		31005911	31005911	31005911	31005911	1
28	Bracket Plug	31006117	31006117	31006117	31006117	1

GRISWOLD PUMP CO.

E, F, G Repair Parts

Page 4

October 1, 2003

Item #	Description	R5EM40	R5EM50	Qty.
PUMPS	1Ph ODP	-----	-----	B/M
	1Ph TEFC	-----	-----	B/M
	3Ph ODP	93053643	93053650	B/M
	3Ph TEFC	93053644	93053651	B/M
PUMP ENDS	1Ph	-----	-----	B/M
	3Ph	93053700	93053718	B/M
MOTORS	1Ph ODP	-----	-----	1
	1Ph TEFC	-----	-----	1
	3Ph ODP	90118994	90114794	1
	3Ph TEFC	90118995	90114795	1
1				
2	Deflector	22020507	22020507	1
4	Sleeve O-rings	47012604	47012604	2
5	Sleeve (Brz)	8028615	8028615	1
6A	Seal Bracket	2063907	2063907	1
7	Mtr/Brkt Cap Screws	14135008	14135008	4
8	Brkt Wear Ring (Brz)	8028706	8028706	1
9A	Mechanical Seal	10037000	10037000	1
10	Shaft Key	22056006	22056006	1
11	Impeller (Enam Cl)	5032800	5079405	1
12	Impeller Washer (SS)	14034607	14034607	1
13	Imp. Adapter (SS)	14417604	14417604	1
14	Imp. Bolt	ALLEN500 13X125U	ALLEN500 13X125U	1
15	Brkt/Case O-ring	47027909	47027909	1
16	Case	3079209	3079209	1
18	Brkt/Case Cap Screws	14133003	14133003	8
19	Case Plugs	31005911	31005911	5
20	Suction Flange	3014602	3014602	1
21	Suct.Flg/Case O-ring	47027909	47027909	1
22	Suct.Flg/Case Cap Screws	14133003	14133003	8
23	Suct.Flg/Wear Ring (Brz)	8028706	8028706	1
24	1/2" Male Comp. Fittings	31051709	31051709	2
25	1/2" Tubing	31092505	31092505	18"
27	Flange Plugs	31006117	31006117	2
		31005911	31005911	1
28	Bracket Plug	31006117	31006117	1

GRISWOLD PUMP CO.

E, F, G Repair Parts

Page 5

October 1, 2003

Item #	Description	R6EM30	R6EM40	R6EM50	Qty.
PUMPS	1Ph ODP	-----	-----	-----	B/M
	1Ph TEFC	-----	-----	-----	B/M
	3Ph ODP	93053825	93053833	93053841	B/M
	3Ph TEFC	93053882	93053834	93053842	B/M
PUMP ENDS	1Ph	-----	-----	-----	B/M
	3Ph	93053890	93053908	93053916	B/M
MOTORS	1Ph ODP	-----	-----	-----	1
	1Ph TEFC	-----	-----	-----	1
	3Ph ODP	90114406	90108994	90114794	1
	3Ph TEFC	90114786	90118995	90114795	1
1					
2	Deflector	22020507	22020507	22020507	1
4	Sleeve O-rings	47012604	47012604	47012604	2
5	Sleeve (Brz)	8028615	8028615	8028615	1
6A	Seal Bracket	2084705	2084705	2084705	1
7	Mtr/Brkt Cap Screws	14135008	14135008	14135008	4
8	Brkt Wear Ring (Brz)	8071102	8071102	8071102	1
9A	Mechanical Seal	10037000	10037000	10037000	1
10	Shaft Key	22056006	22056006	22056006	1
11	Impeller	5208517	5208616	5208913	1
12	Imp. Washer (SS)	14034607	14034607	14034607	1
13	Imp. Adapter (SS)	14417604	14417604	14417604	1
14	Imp. Bolt	ALLEN500 13X125U	ALLEN500 13X125U	ALLEN500 13X125U	1
15	Brkt/Case O-ring	47027909	47027909	47027909	1
16	Case	3043502	3043502	3043502	1
18	Brkt/Case Cap Screws	14133003	14133003	14133003	8
19	Case Plugs	31005911	31005911	31005911	5
20	Suction Flange	3065406	3065406	3065406	1
21	Suct.Flq/Case O-ring	47028105	47028105	47028105	1
22	Suct.Flq/Case Cap Screws	14133003	14133003	14133003	8
23	Suct.Flq/Wear Ring (Brz)	8071102	8071102	8071102	1
24	1/2" Male Comp. Fittings	31051709	31051709	31051709	2
25	1/2" Tubing	31092505	31092505	31092505	18"
27	Flange Plug	31006117 31005911	31006117 31005911	31006117 31005911	1 1
28	Bracket Plug	31006117 31005911	31006117 31005911	31006117 31005911	1 1

GRISWOLD PUMP CO.

E, F, G Repair Parts

Page 6

October 1, 2003

Item #	Description	R6EM60	R6EM75	R6EM100	Qty.
PUMPS	1Ph ODP	-----	-----	-----	B/M
	1Ph TEFC	-----	-----	-----	B/M
	3Ph ODP	93053858	93053866	93053874	B/M
	3Ph TEFC	93053859	93053867	93053875	B/M
PUMP ENDS	1Ph	-----	-----	-----	B/M
	3Ph	93053924	93053932	93053940	B/M
MOTORS	1Ph ODP	-----	-----	-----	1
	1Ph TEFC	-----	-----	-----	1
	3Ph ODP	90114802	90114828	90113184	1
	3Ph TEFC	90114800	90114829	90113185	1
1					
2	Deflector	22032205	22032205	22032205	1
4	Sleeve O-rings	47013206	47013206	47013206	2
5	Sleeve (Brz)	8259210	8259210	8259210	1
6A	Seal Bracket	2111102	2111102	2111102	1
7	Mtr/Brkt Cap Screws	14135008	14135008	14135008	4
8	Brkt Wear Ring (Brz)	8071102	8071102	8071102	1
9A	Mechanical Seal	10036507	10036507	10036507	1
10	Shaft Key	14060800	14060800	14060800	1
11	Impeller	5379318	5379417	5379516	1
12	Imp. Washer (SS)	14040307	14040307	14040307	1
13	Imp. Adapter (SS)	SX10253	SX10253	SX10253	1
14	Imp. Bolt	ALLEN875 9X225U	ALLEN875 9X225U	ALLEN875 9X225U	1
15	Brkt/Case O-ring	47027909	47027909	47027909	1
16	Case	3043502	3043502	3070901	1
18	Brkt/Case Cap Screws	14133003	14133003	14133003	8
19	Case Plugs	31005911	31005911	31005911	5
20	Suction Flange	3065406	3065406	3081809	1
21	Suct.Flг/Case O-ring	47028105	47028105	47028105	1
22	Suct.Flг/Case Cap Screws	14133003	14133003	14133003	8
23	Suct.Flг/Wear Ring (Brz)	8071102	8071102	8071102	1
24	1/2" Male Comp. Fittings	31051709	31051709	31051709	2
25	1/2" Tubing	31092505	31092505	31092505	18"
27	Flange Plug	31006117	31006117	31006117	1
		31005911	31005911	31005911	1
28	Bracket Plug	31006117	31006117	31006117	1
		31005911	31005911	31005911	1