



Leisuretime

Pool Pump

“ The range of Leisure Time pool pumps have been purposefully designed to provide maximum performance and corrosion resistance at a realistic cost. ”

Self-Aligning Barrel Unions

Onga's unique 5 degree self-aligning barrel unions make pipework connection a breeze.

Electrical approvals

Rest easy knowing your Leisure Time pool pump has passed all stringent Australian Standards for safety and is approved for installation within the wetted zone of the pool area.

Elevated motor foot

Incorporating an elevated mount into the pump design keeps moisture well away from the motor.

Corrosion resistant endshield

Unique electro-phoretic plated cast iron endshield for better corrosion protection extending the life of the pump.

Large hair and lint pot with see through lid

Easy to clean large hair and lint pot with a clear lid so you can check at a glance whether or not it is full.

Low friction lint pot O-ring

Having a low friction teflon impregnated self-lubricating O-ring on the lint pot means you only need to tighten the lid by hand. No tools are necessary and because you only tighten by hand, removing the lid is also a simple task.



Leisuretime

Pool Pump



Operating Conditions

Suitable for pumping clean non-aggressive liquids without solids or fibres in suspension.

Fluid:	Water
Maximum working pressure:	270 kPa
Water temperature range:	5°C-40°C
Ambient temperature:	55°C maximum

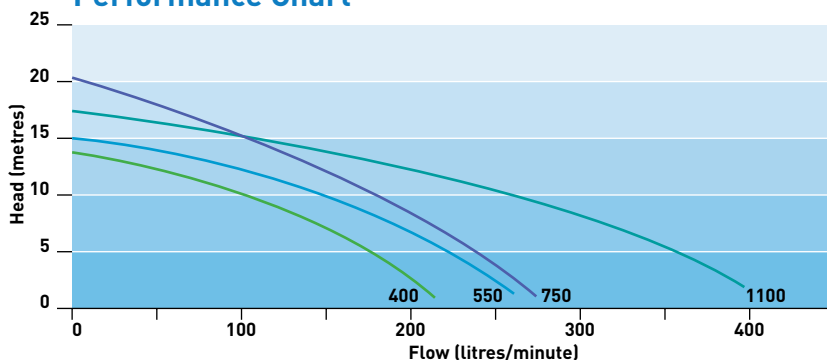
Motor

Type:	TEFC 2 pole
Nominal speed:	2900 rpm
IP rating:	IPX55
Insulation class:	Class F
Thermal overload:	Internal
Frequency:	50Hz*
Voltage:	230-240*
Bearing type:	Deep groove ball bearing with double contact lip seal
Bearing temperature rating:	150°C

Materials

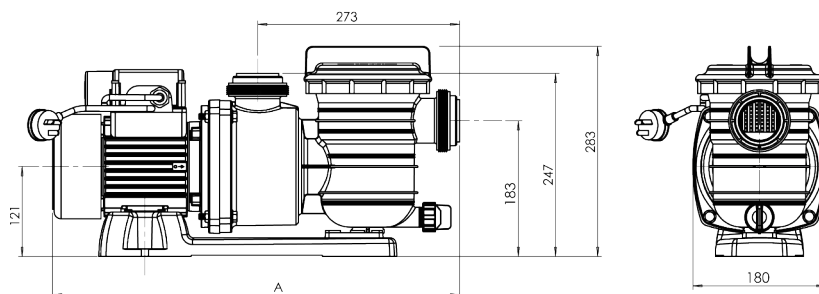
Component	Material
Pump casing:	Glass filled ABS
Clacker:	Polypropylene
Impeller:	Glass filled ABS
Baffle:	Glass filled ABS
Drain plug:	Polypropylene
Diffuser:	Glass filled ABS
Basket:	HD polyethylene
Shaft sleeve:	Nylon
Motor shaft:	K-1137 steel
End shield:	Double zinc coated cast iron
Hair and lint pot O-ring:	Nitrile
O-rings:	Low friction nitrile
Barrel unions:	ABS
Hair and lint pot lid:	Polycarbonate
Mechanical seal, 1/2" type 6 (LTP1100 1/2"):	
Flexible bellows:	Nitrile
Stationary face:	Ceramic
Rotating face:	Carbon
Spring:	304 stainless steel

Performance Chart



Dimensions

Model	LTP400	LTP550	LTP750	LTP1100
A	535mm	535mm	535mm	583mm



Model Data

Pump Model	Motor Kw (hp)	Supply Voltage	Phase	Full Load Current (A)	Full Rotor Current (A)	Capacitor mfd	dB(A)*	Supply Cord Length (m)	Net Weight (kg)	Packed Weight (kg)	Carton Dimensions L x W x H (mm)
LTP400	0.4 (1/2)	230-240	1	2.7	10	12	60	2	10.5	12	610 x 190 x 305
LTP550	0.5 (3/4)	230-240	1	3.5	17	20	59	2	12.5	14	610 x 190 x 305
LTP750	0.75 (1)	230-240	1	4.3	17	20	64	2	12.5	14	610 x 190 x 305
LTP1100	1.1 (1 1/2)	230-240	1	5.4	23	25	65	2	13.5	15	610 x 190 x 305

* dB(A) @ 1 metre



www.dowdens.com.au

MACKAY (Head Office)

9-15 Industrial Street
MACKAY QLD 4740
+61 (07) 4969 4949
+61 (07) 4969 4900
info@dowdens.com.au

PROSERPINE

4 Pepper Street
PROSERPINE QLD 4800
+61 (07) 4969 4940
+61 (07) 4969 4900
prossy@dowdens.com.au

ROCKHAMPTON

4 / 415 Yaamba Road
NTH ROCKHAMPTON QLD 4701
+61 (07) 4923 6969
+61 (07) 4923 6900
rocky@dowdens.com.au

BRISBANE

24 / 140 Wecker Road
MANSFIELD QLD 4122
+61 (07) 3828 7000
+61 (07) 3828 7055
brisbane@dowdens.com.au